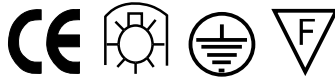




## MAINS VOLTAGE SGU10 LOW ENERGY FIRE PROTECTION DOWNLIGHTS




**PLEASE READ THESE INSTRUCTIONS CAREFULLY BEFORE INSTALLATION  
LEAVE A COPY FOR THE USER / MAINTENANCE ENGINEER FOR FUTURE REFERENCE**

### FEATURES

- Integrated Intumescent material completely seals the downlight in the event of a fire.
- Registered Community Design Pending.
- UK Patent Pending.
- 2 Year Guarantee.
- Cast aluminium Fixed and IP65 versions available.
- Tested to BS476 Part 21 (Fire rating), suitable for 30, 60 and 90 minute fire rated ceilings.
- Tested to BS EN ISO 140-3:1995 & BE EN ISO 140-6:1998 (Acoustic rating), Maintaining the integrity of the sound insulation of a separating or internal floor.

### IMPORTANT INSTALLATION INFORMATION

- Installation should be carried out in accordance with the latest edition of the I.E.E. Wiring Regulations (BS7671) and taking into consideration the latest Building Regulations. If in doubt, consult a qualified electrician.
- Maximum Voltage 240V 50Hz AC.
- **IMPORTANT** This luminaire is only for use with the Aurora SGU10 11 Watt low energy lamp
- Ensure that ALL electrical connections are tight with no loose strands, including factory made connections
- This luminaire is for indoor use only.
- DO NOT install into new plaster or damp areas.
- Ensure there is adequate free air circulation of at least 50mm around the luminaire. All luminaires run hot. It is the installer's responsibility to consider fire risk and take appropriate precautions.
- The luminaire must not, under any circumstances, be covered with any insulation materials.
- Before commencing installation or maintenance, ensure electricity is switched off at the mains.
- The nearest illuminated surface must be at least 0.3m from the front of the luminaire.
-  11W- If this luminaire is to be mounted on a Normally Flammable Surface e.g. a wooden ceiling or a material based on wood, the maximum lamp rating is a 11-Watt.

### IMPORTANT USER INFORMATION

- Always switch off mains supply before servicing, fitting or changing the lamp.
- Replace failed lamps immediately. Allow the lamp and fitting to cool before replacing lamp.
- This luminaire will only accept an Aurora SGU10 maximum 11W low energy lamp. Ensure that the correct lamp type and wattage is fitted.


### INSTALLATION INSTRUCTIONS

#### FIXED and IP65

1. Select the required position for the luminaire ensuring the clearances shown in Fig.1 are observed. Beware of joists, water pipes and electric cables. Use the cut-out template on the inside lid of the box to cut a hole in the ceiling for the type of luminaire to be fitted. For IP65 luminaires, insure the contact area between the fitting and the contact surface is smoothed off. A suitable silicon sealant may be used between the gasket of the downlight housing and the mounting surface. Failure to do this may result in the IP65 rating not being maintained.

#### CUTOUT DIMENSIONS:

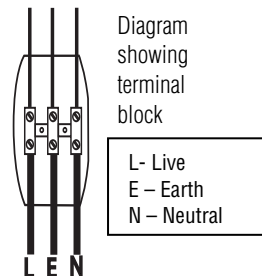
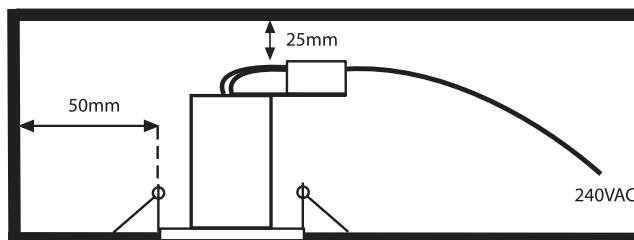
A2-DLM801 85mm, A2-DLM803 80mm

2. Connect the mains supply cable(s) to the terminal block (see Fig.2). Ensure that there are no exposed conductors or trapped insulation. Conductor size: 1mm - 2.5mm.  
LIVE – (Red or Brown) to Terminal Marked L NEUTRAL – (Black or Blue) to Terminal marked N  
EARTH – (Green/Yellow) to Terminal marked 
3. The “looping-in” of the fixed wiring supply should be maintained. See Fig. 3.
4. Slide the legs of the mounting spring clips into the ceiling cut-out and push the luminaire up into the aperture. Ensure that it is securely located.
5. Ensure that the lamp is correctly located in the lampholder. Switch on the power supply.

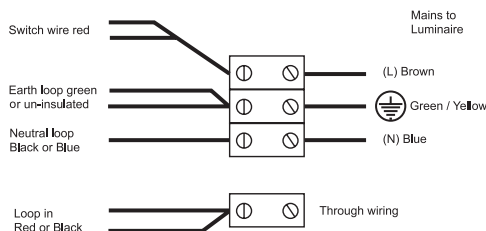
## GENERAL

- Aurora Low Energy Fire protection downlights are to be connected to a 240V mains supply (no transformer is required)
- IP65 rated luminaires are protected against dust and jets of water. They are suitable for installation in locations containing a bath or shower, as defined by the I.E.E Wiring Regulations, Zones 1, 2 where water jets are likely.

**Fig. 1**



**Fig.2**



**Fig.3**

If your luminaire is not at the end of a wiring spur, then there will be an extra pair of wires together (looping-in wires) in the supply wiring which could be coloured black or red. These should be connected together using a fourth approved terminal block as shown. If in doubt consult a qualified electrician

## Environmental Protection (W.E.E.E.) – Aurora’s WEEE Reg.No. WEE/BG0130YX



Waste Electrical & Electronic Equipment Regulations (WEEE) requires that any of our products showing this marking (left) must not be disposed of with other household or commercial waste. Aurora does not levy any WEEE disposal charges to its customers for affected WEEE related products. To prevent possible harm to the environment or human health from uncontrolled waste disposal, please separate any such product from other waste types and recycle it responsibly at your local facilities. Check with your Local Authority, Recycling Centre or retailer for recycling advice. If, when you purchased any Aurora product, your supplier included a WEEE disposal fee, you should then contact your supplier for advice on his takeback of the product for the correct disposal.

## GUARANTEE

This product is guaranteed in the UK for a period of 2 years from the date of purchase (excludes lamps). The guarantee is invalid in the case of improper use, installation, tampering, removal of the Q.C. date label, installation in an improper working environment or installation not according to the current edition of the I.E.E. Wiring Regulations (BS7671). Should this product fail during the guarantee period it will be replaced free of charge, subject to correct installation and return of the faulty unit. Aurora does not accept responsibility for any installation costs associated with the replacement of this product. Your statutory rights are not affected. Aurora reserves the right to alter specifications without prior notice.